

EMERGING TECH: GENERATIVE AI

The Australian Medical Association is calling for stronger regulations after doctors use ChatGPT to write medical notes. This news comes at the same time that a study is released from Stanford and UC Berkeley that suggests ChatGPT is getting 'dumber'. Some are clearly more trusting than others, should we be worried about who those people are? What do New Zealanders think about generative AI options? Where are we happy to adapt and where are our concerns?

Half of New Zealanders believe that generative AI or chatbot technology like ChatGPT will damage the way people interact and communicate with each other. Indeed, if you ask ChatGPT, it will list its own concerns as potential to reduce critical thinking and original thought, misinformation, emotional disconnect and loss of language skills.

Half of us though do believe that generative AI will improve the way people work, with potential gains in productivity, problem-solving and decision-making processes.

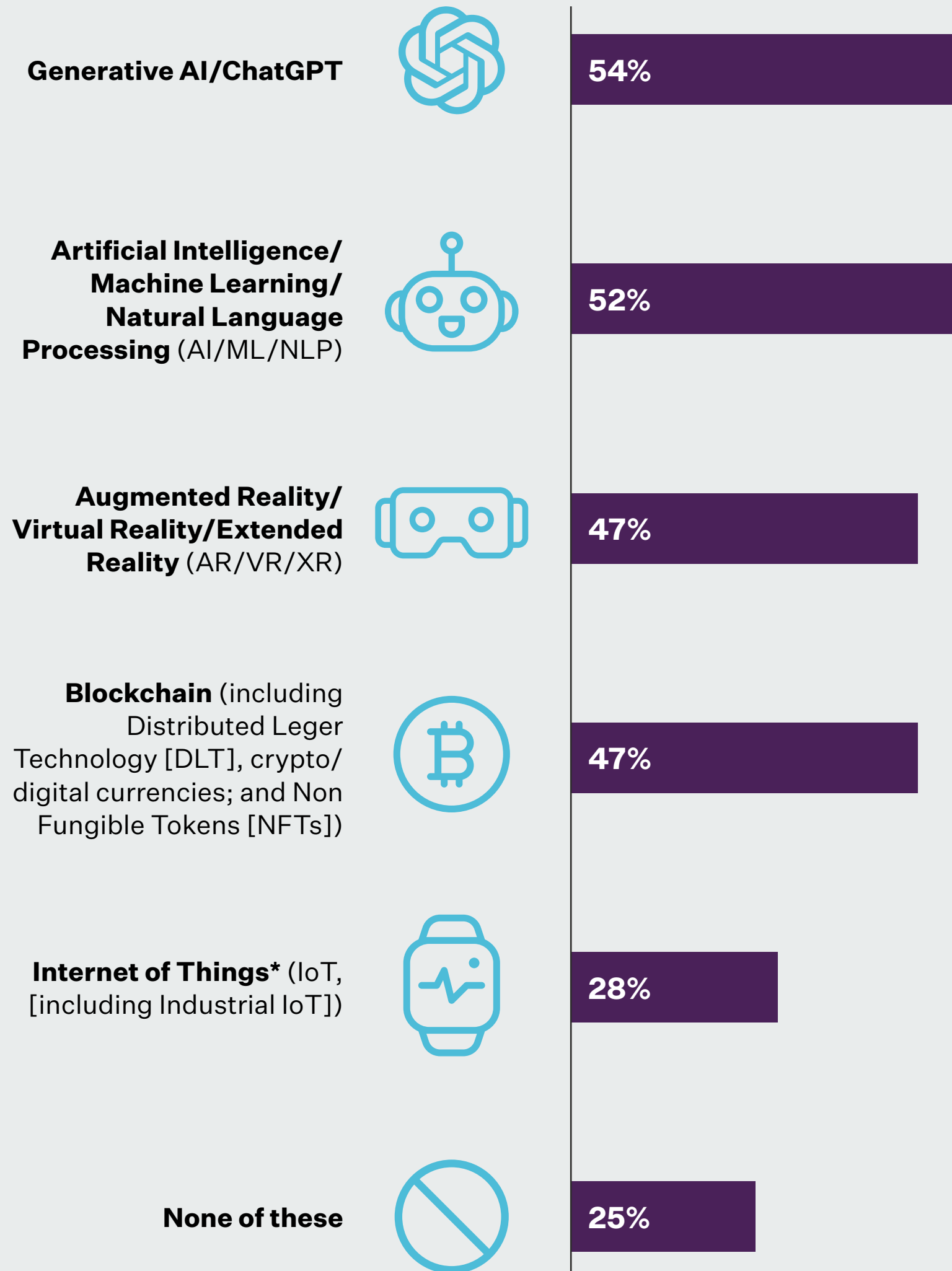
Ethical considerations, data privacy and potential biases in AI models need to be addressed to ensure responsible and effective use both in and out of the workplace. Nearly two-thirds do not think there are sufficient legal frameworks and regulations around the AI industry. The root of the problem is perceived to be human: Deliberate misuse to spread false information is a serious concern for 51% of our sample, whereas AI technologies creating an answer based on inaccurate data is a serious concern for significantly less at 42% (still a significant proportion though).

Generative AI can provide a level of response but it cannot tell you specifically what New Zealanders are thinking. Get in touch with us if you have a question that needs an answer: liz@researchfirst.co.nz

in association with

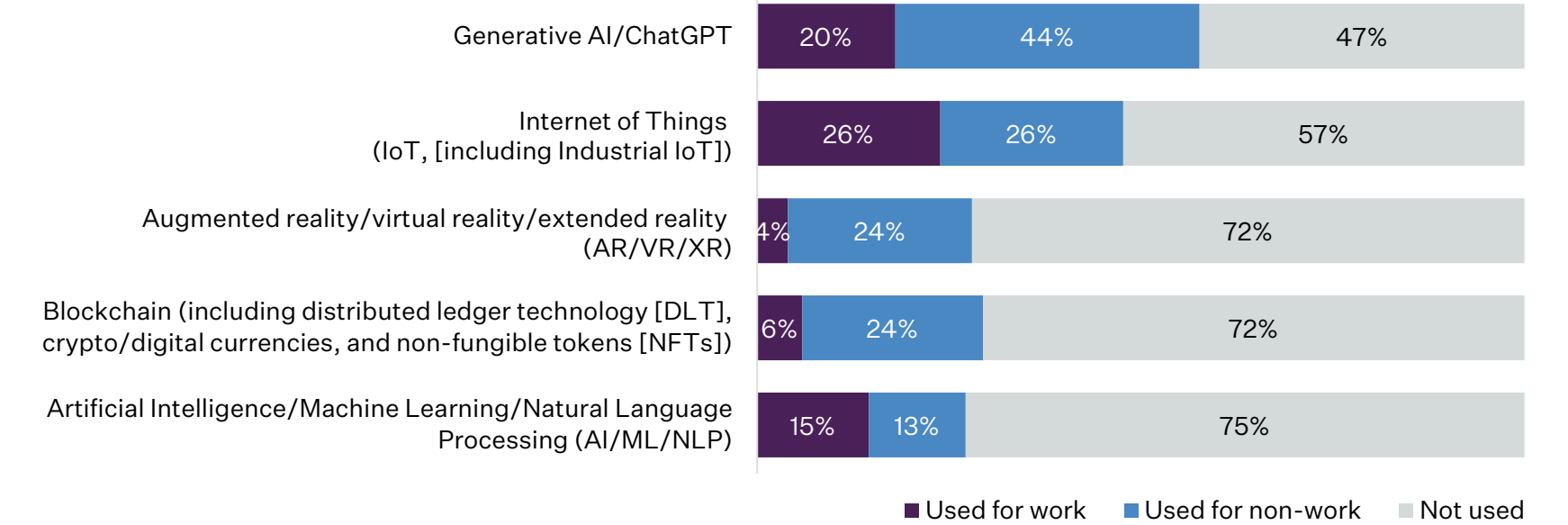


Which of the following **emerging technologies** are you aware of?

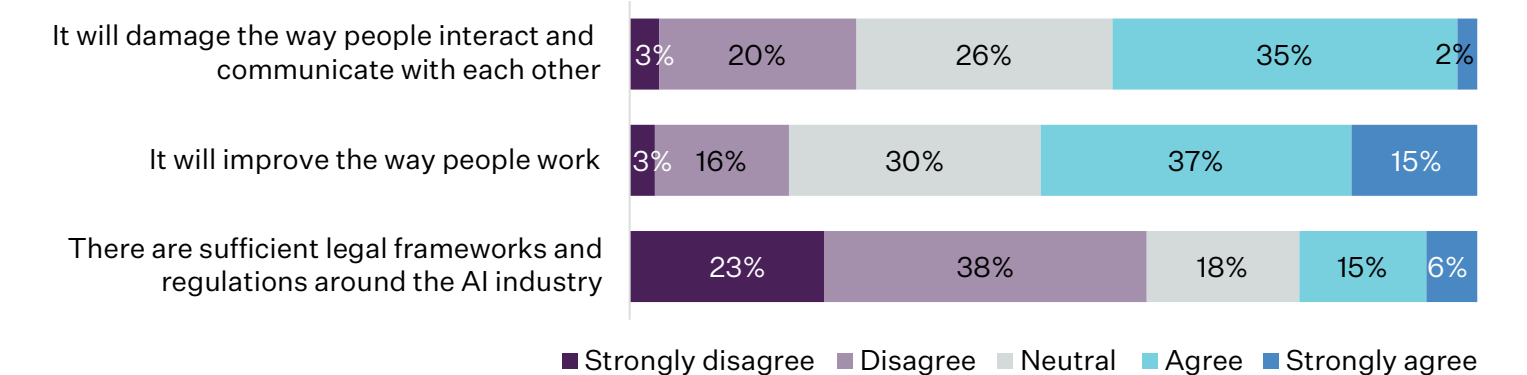


*Awareness of IoT is interesting, only a quarter said they were aware of it. However, examples are commonplace; sales of smartwatches are increasing and with a driverless bus tested on the Wellington waterfront in February we are assuming this is a low reading based on awareness of the 'IoT' terminology.

For those you're aware of... **which have you used?**



How far do you **agree or disagree** with the following statements about generative AI or chatbot technology like ChatGPT?



How **concerned** are you about the following in relation to generative AI or chatbot technology like ChatGPT?

